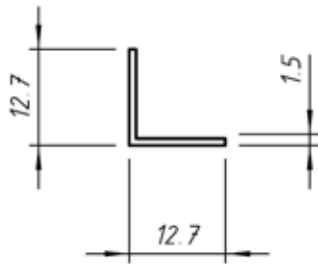
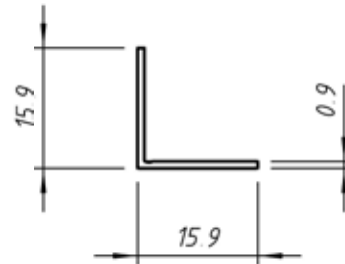


CANTONEIRAS



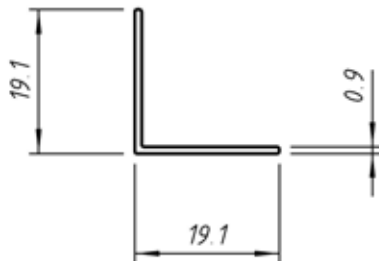
AL-33 (CT-001)

0,060 Kg/m



AL-34 (CT-002)

0,075 Kg/m



AL-35 (CT-003)

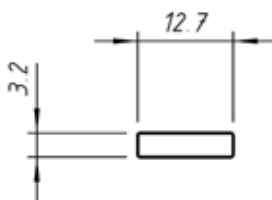
0,091 Kg/m



AL-36 (CT-004)

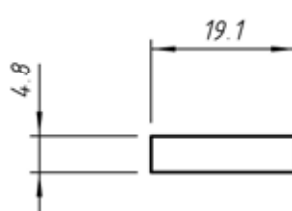
0,121 Kg/m

BARRA CHATA E VERGALHAO



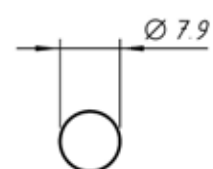
AL-56 (BAR-012)

0,108 Kg/m



AL-57 (BAR-050)

0,245 Kg/m



AL-58 (VER-003)

0,134 Kg/m